

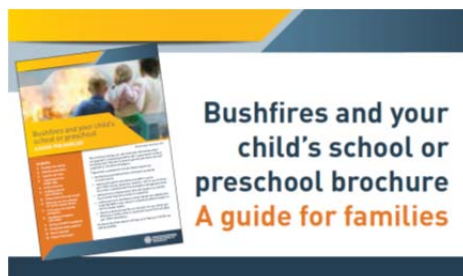
## Cummins Area School is located in a low-risk bushfire area.

While we have a have an emergency and bushfire response plan for our site it is important that we are all prepared for a bushfire emergency.

### Parent and family checklist

We all need to be ready for the fire danger season and to keep your children as safe as possible please ensure you:

- download a copy of the *Bushfire and Your Child's School or Preschool* brochure from the DECD Bushfire and Emergency Management website



- read all of the bushfire information provided to you
- talk with your children about what will happen if a bushfire occurs when they are at school or preschool
- update your emergency contact details with us before the start of the fire danger season
- make a personal Bushfire Survival Plan for your family and let us know if this will affect your child's attendance

- download the AlertSA app if you use a smart phone or bookmark the website on your computer.

### 'Catastrophic' fire danger days

'Catastrophic' fire danger days occur when conditions are the worst for a bush or grass fire.

If a fire starts and takes hold on a 'catastrophic' day it will be extremely difficult to control.

### Find out about site closures

Emergency school closures will soon appear on the governments Alerts SA website and mobile app. By downloading the Alert SA app to your mobile device you will be able to obtain real-time information and warnings.



### If a bushfire approaches us

The safety of children in our care is our highest priority if a bushfire approaches our site.

We have a designated building or area, which has been identified as the safest or most suitable place for staff and students to be in this situation.

Evacuation is our last option unless advised otherwise by emergency services.

When we move to our safe place we:

- move everybody inside, close windows, doors, and turn off the air conditioning
- fill available containers with water
- turn on any sprinklers and irrigation systems if it is safe and time permits
- remain inside with the children until the main firefront passes
- listen to local radio or monitor the CFS or AlertSA website for bushfire updates and information
- liaise with DECD Security and Emergency Management team and the CFS to stay informed about changing conditions.

## Further information

### Department for Education and Child Development

#### DECD Emergency Information Hotline

1800 000 279

The DECD Emergency Information Hotline operates during business hours, with an out-of-hours messaging service at other times.

The hotline is the best source of current and up-to-date information on bushfire emergencies.

#### Bushfire and Emergency Management website

[www.decd.sa.gov.au/sites-and-facilities/bushfires-and-emergency-closures/bushfire-information](http://www.decd.sa.gov.au/sites-and-facilities/bushfires-and-emergency-closures/bushfire-information)

#### Country Fire Service

##### Bushfire Information Hotline

1300 362 361

Website [www.cfs.sa.gov.au](http://www.cfs.sa.gov.au)

#### Alert SA

[www.alert.sa.gov.au](http://www.alert.sa.gov.au)

Cummins Area School **has a 'low risk' bushfire rating.**

This means on days of forecast catastrophic fire danger rating, our site will **remain open.**

School buses and taxis will not operate within the Fire Ban District.

**Our phone number is** 08 86762388

If this number is engaged during an emergency, contact;



**DECD  
Emergency  
Information  
Hotline**

**1800 000 279**

# Fire Danger Season 2017-18

## Information for Families



**Government  
of South Australia**  
Department for Education  
and Child Development